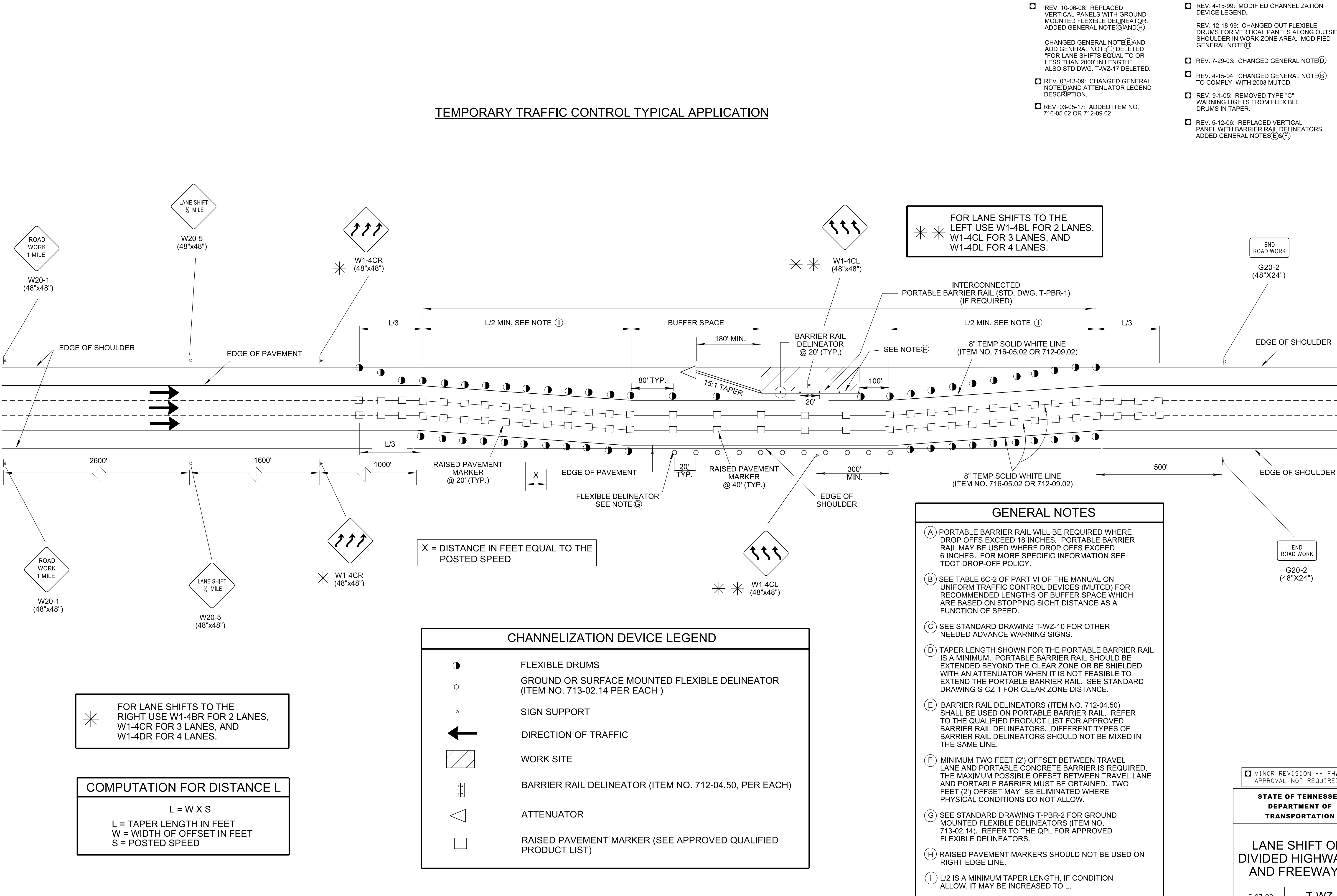


28-APR-2017 14:02 \\AG03SDCWF00008.net.ads.state.in.us\13\SHARED\StandDraw\DESIGN STANDARDS\StandDraw\Traffic Control\Work Zones\Current\TWZ16-20170305.DGN

TEMPORARY TRAFFIC CONTROL TYPICAL APPLICATION



- REV. 10-06-06: REPLACED VERTICAL PANELS WITH GROUND MOUNTED FLEXIBLE DELINEATOR. ADDED GENERAL NOTE(G) AND (H).
- CHANGED GENERAL NOTE(E) AND ADD GENERAL NOTE(T) DELETED "FOR LANE SHIFTS EQUAL TO OR LESS THAN 2000' IN LENGTH". ALSO STD.DWG. T-WZ-17 DELETED.
- REV. 03-13-09: CHANGED GENERAL NOTE(D) AND ATTENUATOR LEGEND DESCRIPTION.
- REV. 03-05-17: ADDED ITEM NO. 716-05.02 OR 712-09.02.

- REV. 4-15-99: MODIFIED CHANNELIZATION DEVICE LEGEND.
- REV. 12-18-99: CHANGED OUT FLEXIBLE DRUMS FOR VERTICAL PANELS ALONG OUTSIDE SHOULDER IN WORK ZONE AREA. MODIFIED GENERAL NOTE(D).
- REV. 7-29-03: CHANGED GENERAL NOTE(D).
- REV. 4-15-04: CHANGED GENERAL NOTE(B) TO COMPLY WITH 2003 MUTCD.
- REV. 9-1-05: REMOVED TYPE "C" WARNING LIGHTS FROM FLEXIBLE DRUMS IN TAPER.
- REV. 5-12-06: REPLACED VERTICAL PANEL WITH BARRIER RAIL DELINEATORS. ADDED GENERAL NOTES(E) & (F).

GENERAL NOTES

- (A) PORTABLE BARRIER RAIL WILL BE REQUIRED WHERE DROP OFFS EXCEED 18 INCHES. PORTABLE BARRIER RAIL MAY BE USED WHERE DROP OFFS EXCEED 6 INCHES. FOR MORE SPECIFIC INFORMATION SEE TDOT DROP-OFF POLICY.
- (B) SEE TABLE 6C-2 OF PART VI OF THE MANUAL ON UNIFORM TRAFFIC CONTROL DEVICES (MUTCD) FOR RECOMMENDED LENGTHS OF BUFFER SPACE WHICH ARE BASED ON STOPPING SIGHT DISTANCE AS A FUNCTION OF SPEED.
- (C) SEE STANDARD DRAWING T-WZ-10 FOR OTHER NEEDED ADVANCE WARNING SIGNS.
- (D) TAPER LENGTH SHOWN FOR THE PORTABLE BARRIER RAIL IS A MINIMUM. PORTABLE BARRIER RAIL SHOULD BE EXTENDED BEYOND THE CLEAR ZONE OR BE SHIELDED WITH AN ATTENUATOR WHEN IT IS NOT FEASIBLE TO EXTEND THE PORTABLE BARRIER RAIL. SEE STANDARD DRAWING S-CZ-1 FOR CLEAR ZONE DISTANCE.
- (E) BARRIER RAIL DELINEATORS (ITEM NO. 712-04.50) SHALL BE USED ON PORTABLE BARRIER RAIL. REFER TO THE QUALIFIED PRODUCT LIST FOR APPROVED BARRIER RAIL DELINEATORS. DIFFERENT TYPES OF BARRIER RAIL DELINEATORS SHOULD NOT BE MIXED IN THE SAME LINE.
- (F) MINIMUM TWO FEET (2') OFFSET BETWEEN TRAVEL LANE AND PORTABLE CONCRETE BARRIER IS REQUIRED. THE MAXIMUM POSSIBLE OFFSET BETWEEN TRAVEL LANE AND PORTABLE BARRIER MUST BE OBTAINED. TWO FEET (2') OFFSET MAY BE ELIMINATED WHERE PHYSICAL CONDITIONS DO NOT ALLOW.
- (G) SEE STANDARD DRAWING T-PBR-2 FOR GROUND MOUNTED FLEXIBLE DELINEATORS (ITEM NO. 713-02.14). REFER TO THE QPL FOR APPROVED FLEXIBLE DELINEATORS.
- (H) RAISED PAVEMENT MARKERS SHOULD NOT BE USED ON RIGHT EDGE LINE.
- (I) L/2 IS A MINIMUM TAPER LENGTH, IF CONDITION ALLOW, IT MAY BE INCREASED TO L.

CHANNELIZATION DEVICE LEGEND

- FLEXIBLE DRUMS
- GROUND OR SURFACE MOUNTED FLEXIBLE DELINEATOR (ITEM NO. 713-02.14 PER EACH)
- SIGN SUPPORT
- DIRECTION OF TRAFFIC
- WORK SITE
- BARRIER RAIL DELINEATOR (ITEM NO. 712-04.50, PER EACH)
- ATTENUATOR
- RAISED PAVEMENT MARKER (SEE APPROVED QUALIFIED PRODUCT LIST)

FOR LANE SHIFTS TO THE RIGHT USE W1-4BR FOR 2 LANES, W1-4CR FOR 3 LANES, AND W1-4DR FOR 4 LANES.

COMPUTATION FOR DISTANCE L

$$L = W \times S$$

$$L = \text{TAPER LENGTH IN FEET}$$

$$W = \text{WIDTH OF OFFSET IN FEET}$$

$$S = \text{POSTED SPEED}$$

MINOR REVISION -- FHWA APPROVAL NOT REQUIRED.

STATE OF TENNESSEE
DEPARTMENT OF
TRANSPORTATION

LANE SHIFT ON
DIVIDED HIGHWAYS
AND FREEWAYS

5-27-98

T-WZ-16